



INTERNATIONAL
MARKETS

Creativity drives us forward

Gautier
SEMENCES

CAULIFLOWER AND OTHER CABBAGES





Our job, our commitments to serving the vegetable farming chain

Know-how & quality: producing seeds according to the best practices

Breeder and seed producer, Gautier Semences markets high quality, healthy and safe seeds for high-performance vegetable farming crops.

The pleasure of taste: the added value of Gautier Semences

Improving taste has always been a major concern in our varietal breeding. Now, the identification of genetic factors of flavours, aromas and textures enables us to select promising varieties faster to offer you ever more tasty vegetables, adapted to all the consumer trends.

Research and varietal creation: the future of the chain

Because we are attentive to the sectors evolution and close to our customers, our Research team participate in numerous national and international projects and conduct ambitious breeding programmes.

A single priority guides our choices: responding to the challenges of the vegetable farming chain for efficient crops, today and tomorrow.

WHITE



SERAC HF1

The quality curd

- Heavy, big size and very white curd
- Slightly bluish green foliage
- Vigorous and semi-erect plant
- Short cycle variety
- Grouped harvest
- For late summer and early autumn harvest, can be suitable for spring cultivation



PLESSI HF1

For versatility in cultivation

- Heavy, white and good quality curd
- Dark green upright leaves that assure a self protection
- Vigorous plant
- Short cycle variety
- Suitable for late spring, summer and early autumn harvest



UBAC HF1

The best against downy mildew

- Very white curd without hairiness, firm and compact with a good tolerance to knocks
- Easy to cut and well wrapped
- Uniform and good presentation
- Grouped harvest
- Good behaviour against downy mildew
- Suitable for autumn harvest



KAYAK HF1

Ideal for processing

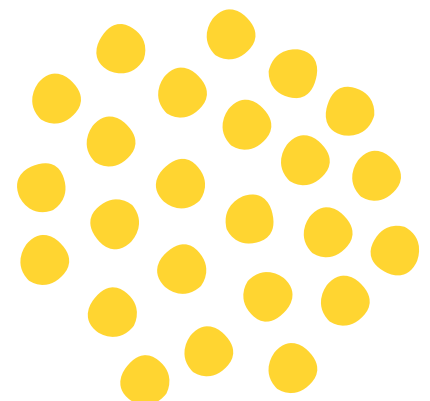
- Nice white curd, heavy and solid, well-rounded and well wrapped
- Easy to cut and to pack for the fresh market
- High percentage of medium size florets for processing
- Suitable for autumn harvest



DRAKAR HF1

The one for cold conditions

- White curd very smooth and well wrapped
- Upright foliage, robust and strong
- Nice blue-green leaves
- Homogeneous and grouped production
- Good cold tolerance
- Suitable for early winter harvest



COLOURED



DORLEAC HF1

The orange, easy-to-harvest

- Beautiful pastel orange coloured curd
- Leaves that assure a good protection of the curd
- Vigorous, upright plant
- Easy to harvest
- Suitable for high density harvest
- For summer and autumn harvest



BICOLI

The bicolour cauliflower to snack

- Light yellow curd on the top and purple below
- A very original and attractive presentation unique on the market
- A slightly mustard taste well-typed that gives it flavour and character
- Lots of small florets, ideal for snacking
- Stocky and upright plant, easy to cut
- Possibility of higher density planting
- For autumn harvest



PARMAC HF1

The cauliflower combining attractive colour and good flavour

- Light purple round curd
- Well wrapped
- Vigorous and erect plant
- Original colour and good taste
- For summer and autumn harvest

PARMAC, a surprising colour whether it's raw or cooked



OUR RANGE IN DETAIL

CAULIFLOWERS

Variety	Vegetative cycle (in days)	Curd colour	Harvest
WHITE			
SERAC - HFI	70-80	Very white	Late summer and early autumn Also suitable for spring crops
UBAC	75-85	White	Autumn
PLESSI - HFI	75-85	White	Late spring, summer and early autumn
KAYAC - HFI	90-100	White	Autumn
DRAKAR - HFI	130-150	White	December and early January in southern areas
COLOURED			
PARMAC - HFI	85-95	Purple	Summer - Autumn
DORLEAC - HFI	85-90	Orange pastel	Summer - Early Autumn
BICOLI	90-100	Bicolour	Autumn

OTHER CABBAGES

Variety	Forme	Vegetative cycle (in days)	Curd colour	Weight (kg)	Harvest
GREEN CABBAGE					
Pointu de Chateaurenard CASTELARD - HFI	Pointed	75	Dark green	0,8-1,3	End of winter - Spring
CHARMANT - HFI	Round	60-75	Dark green	1,2-1,4	Spring - Summer - Autumn
SAVOY CABBAGE					
MELISSA - HFI	Round	80	Dark green	1-1,5	Spring - Summer - Autumn
SAVOY KING - HFI	Slightly flattened round	125	Medium green	1,4-1,8	Spring - Summer - Autumn
WIROSA - HFI	Round	140	Dark green	1,4-2,0	Autumn - Winter
RED CABBAGE					
ROOKIE - HFI	Round	70	Dark red	1,4 - 1,8	Summer - Autumn
BRUSSELS SPROUTS					
HERACLES - HFI	Round	-	Light green	-	Autumn
BROCCOLI					
GREEN BELT - HFI	Slightly flattened round	80	Bluish green	0,3-0,4	Spring - Autumn

The advice and suggestions are provided for guidance only and can not, therefore, include a guarantee of results.



THE GAUTIER SALES TEAM



AREA SALES DIRECTOR
NORTHERN EUROPE HIGH TECH TOMATO,
SPAIN, AMERICAS, ASIA, PERSIAN GULF
ERIC BARNERON
eric.barneron@gautiersemences.com
+33 6 84 76 33 64



SALES AND TECHNICAL REPRESENTATIVE
RUSSIA, NORTHERN, CENTRAL AND
EASTERN EUROPE
EDOUARD ELIZAROV
edouard.elizarov@gautiersemences.com
+33 6 87 70 27 59



AREA SALES DIRECTOR
NORTHERN, CENTRAL AND EASTERN
EUROPE, TURKEY
MARIN BOURAYNE
marin.bourayne@gautiersemences.com
+33 6 22 44 94 17



AREA SALES MANAGER
AMERICAS
CLÉMENT LABORDE
clement.laborde@gautiersemences.com
+52 (442) 607 9764



CUSTOMER SERVICE
commercial@gautiersemences.com
+33 4 90 240 240



SALES AND TECHNICAL REPRESENTATIVE
CHINA
YU HAN
yu.han@gautiersemences.com
+86 180 6327 0712